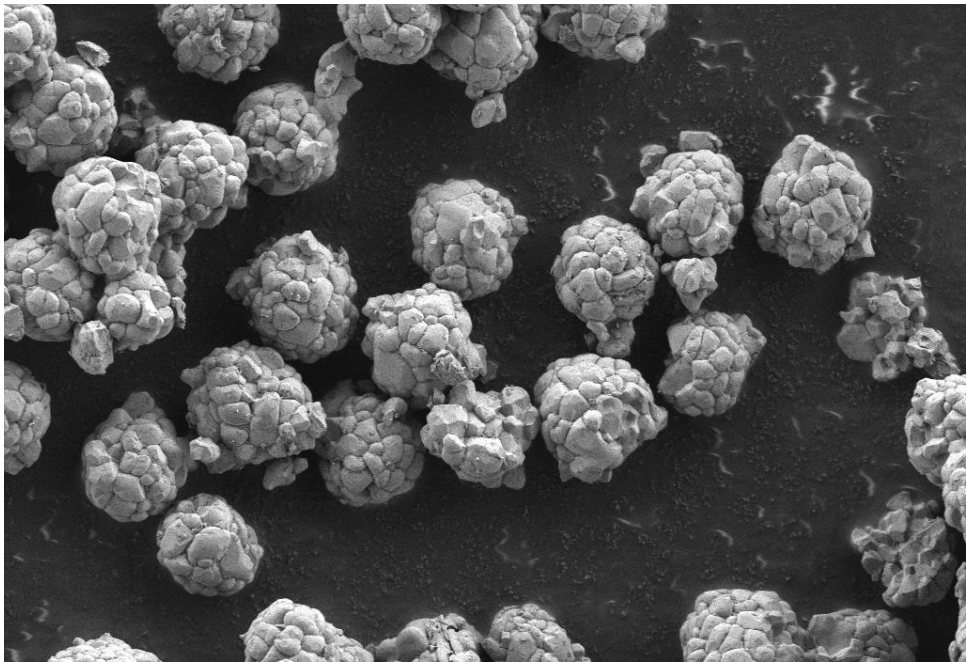


Particle Segmentation

(Using Segment Anything Model)

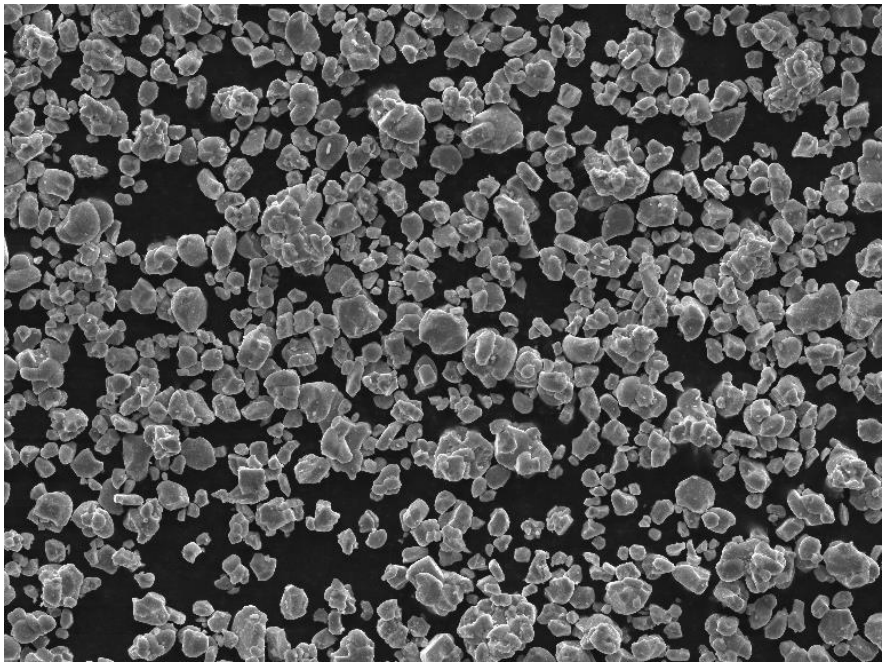
The aim of the project is to improve the segmentation by adapting the Segment anything model using LoRA.

1차시



1-SCN83L001C_1_2KV X 2K

2차시

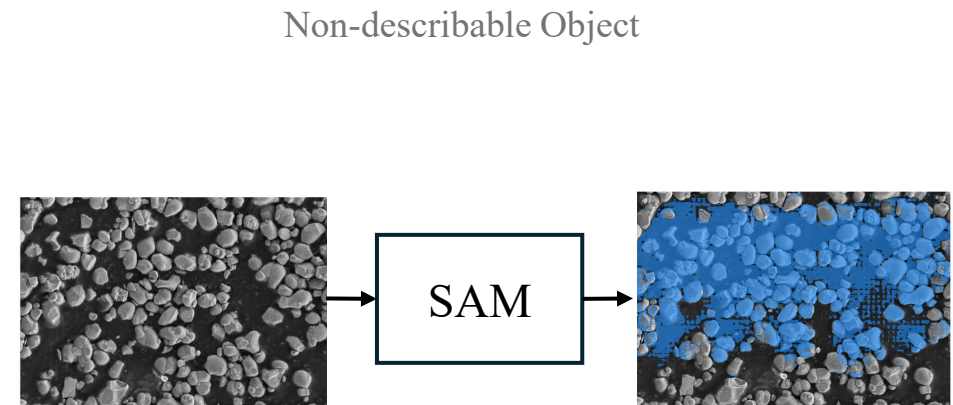
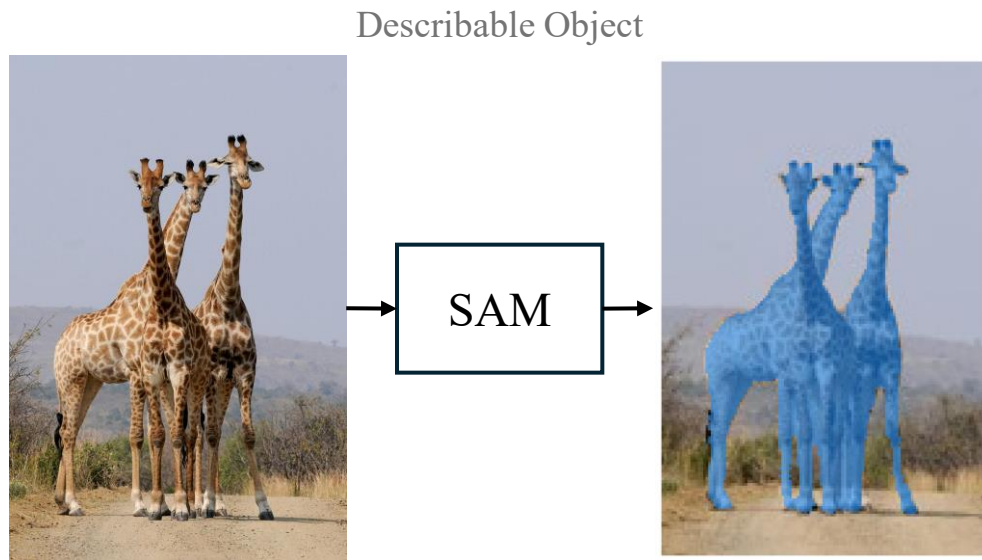


SIPL3-28AJ-1_2K_1_

Segment Anything Model

The Segment Anything Model (SAM) is a promptable image-segmentation foundation model introduced in April 2023¹.

It is trained on the SA-1B dataset—11 million images paired with 1.1 billion segmentation masks. As a result, it can generate rich, generalizable image representations which helps in segmenting objects in images. SAM can accurately segment almost any clearly describable object.



Both Segmentation results are produced using SAM predictor with base model

However, **SAM struggles with non-describable object** images.

To help SAM perform better we need to adapt it.

¹[Segment Anything](#)

Adapting Segment Anything Model

Available methods for adapting SAM

1. Full Fine-tuning

Initialize with pre-trained weights and all model parameters are updated while training.

Has the highest accuracy but required a lot of training resources¹.

2. Feature Extractor and Custom Head

The backbone is kept frozen and only the lightweight custom head is trained.

Less training resources but adaptation is limited and underperform when domain shift is large².

3. Adaptors

Insert small “bottleneck” layers (adapters) between transformer blocks. It freezes original weights and trains only adapter parameters.

Adds just 5-10 % extra parameters per task and near full-fine-tune performance^{2,3}.

Low Rank Adaptor (LoRA)

Keeps base weights frozen and only adds a few parameters to update the weights in the attention layers.

Matches full fine-tuning with no added inference latency⁴.

¹[A survey on Transfer Learning](#)

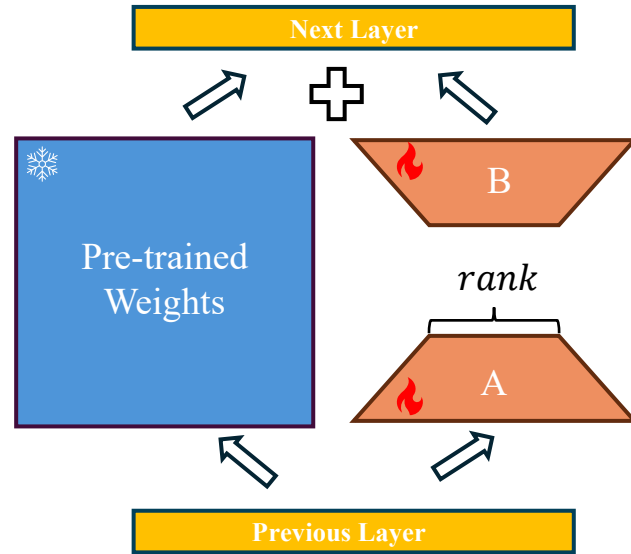
²[Parameter-Efficient Transfer Learning for NLP](#)

³[The Power of Scale for Parameter-Efficient Prompt Tuning](#)

⁴[LoRA: Low-Rank Adaptation of Large Language Models](#)

Adapting Segment Anything Model

Low Rank Adaptor (LoRA)



LoRA freezes the pre-trained model weights and injects trainable rank decomposition matrices (A and B) into each layer.

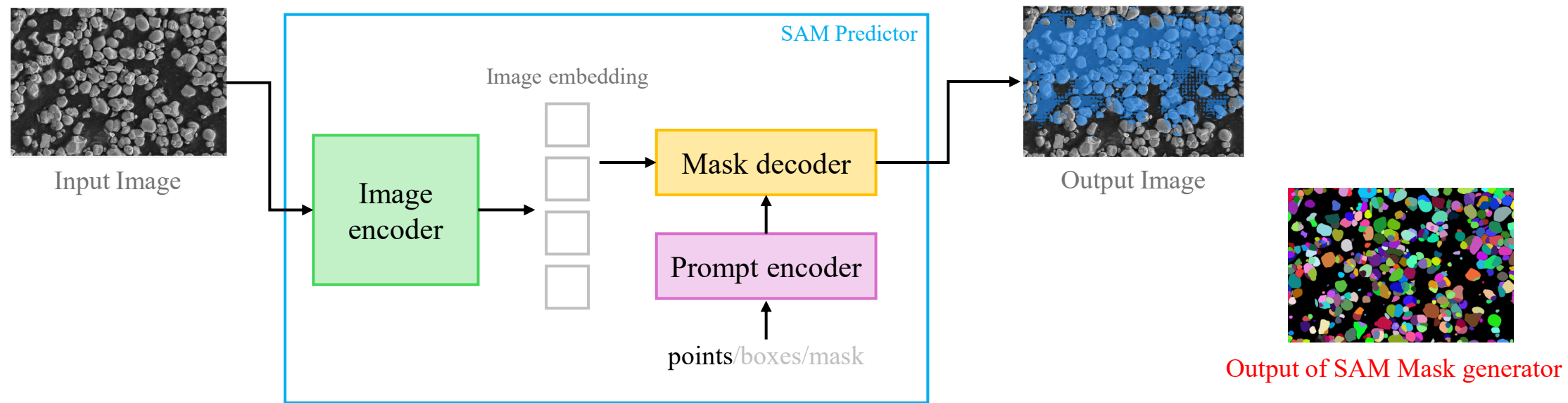
While training, the A and B matrices are updated simultaneously and is then added to the pre-trained weights.

LoRA performs on par with traditional fine-tuning with **no additional inference latency**¹.

¹LoRA: Low-Rank Adaptation of Large Language Models

Adapting Segment Anything Model

Need for SAM adaptation?

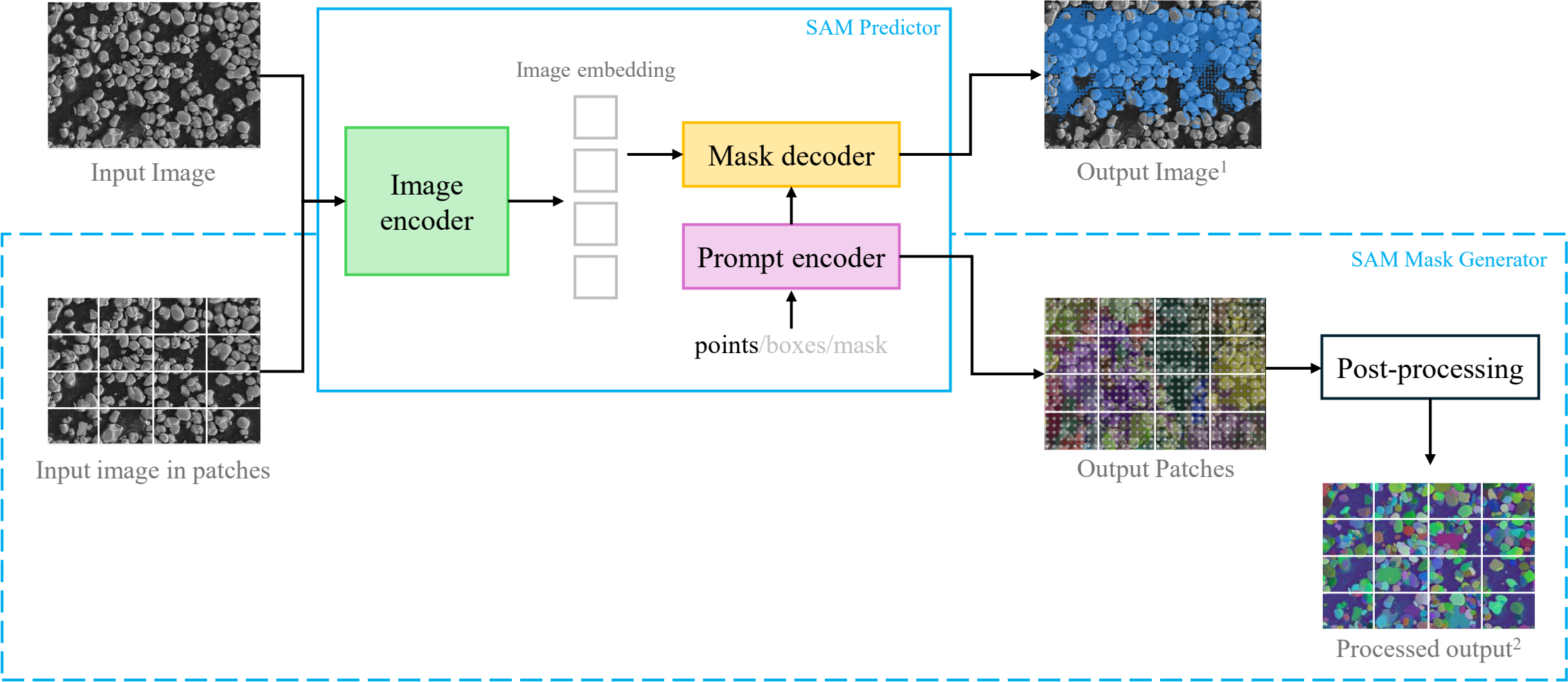


Adapting Segment Anything Model

Need for SAM adaptation?

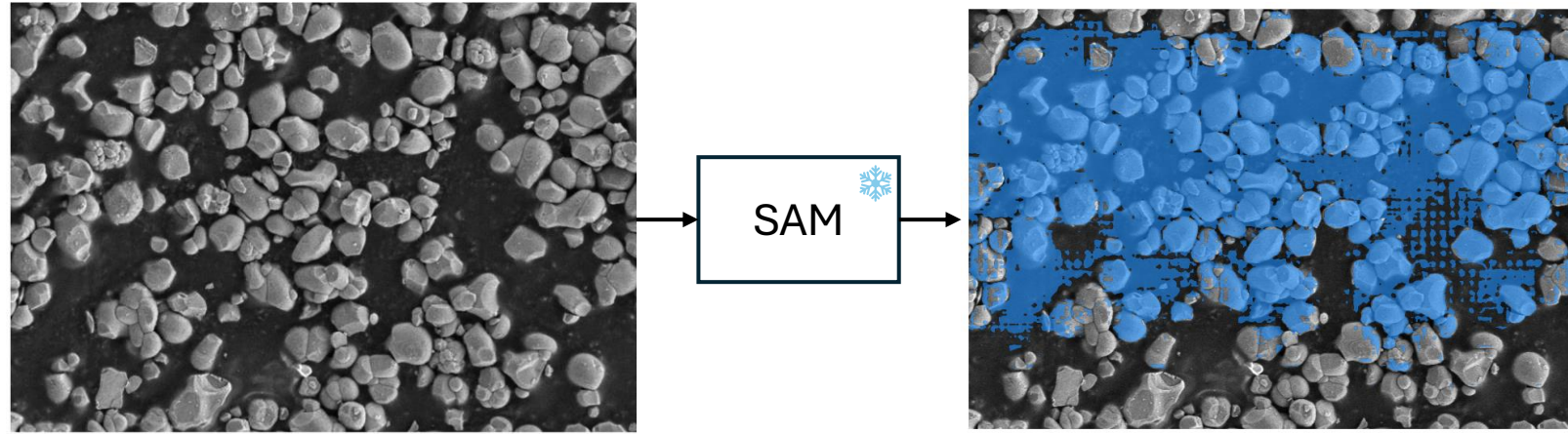
¹SAM (default) predictor does single-object segmentation so there is only one color

²Mask generator randomly adds color to each individual detection during post-processing



Need for SAM adaptation?

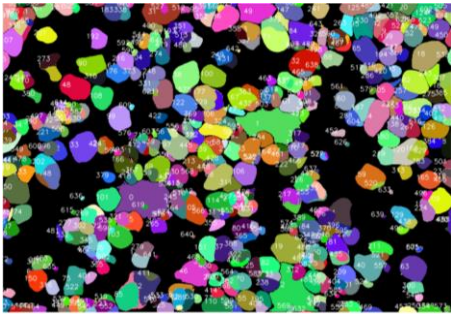
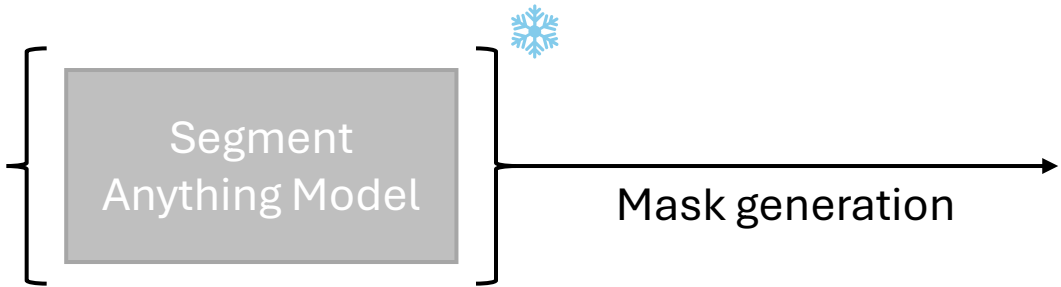
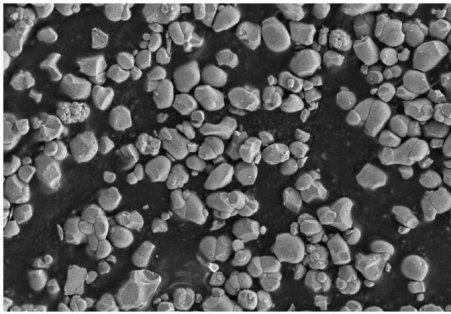
Why this matters?



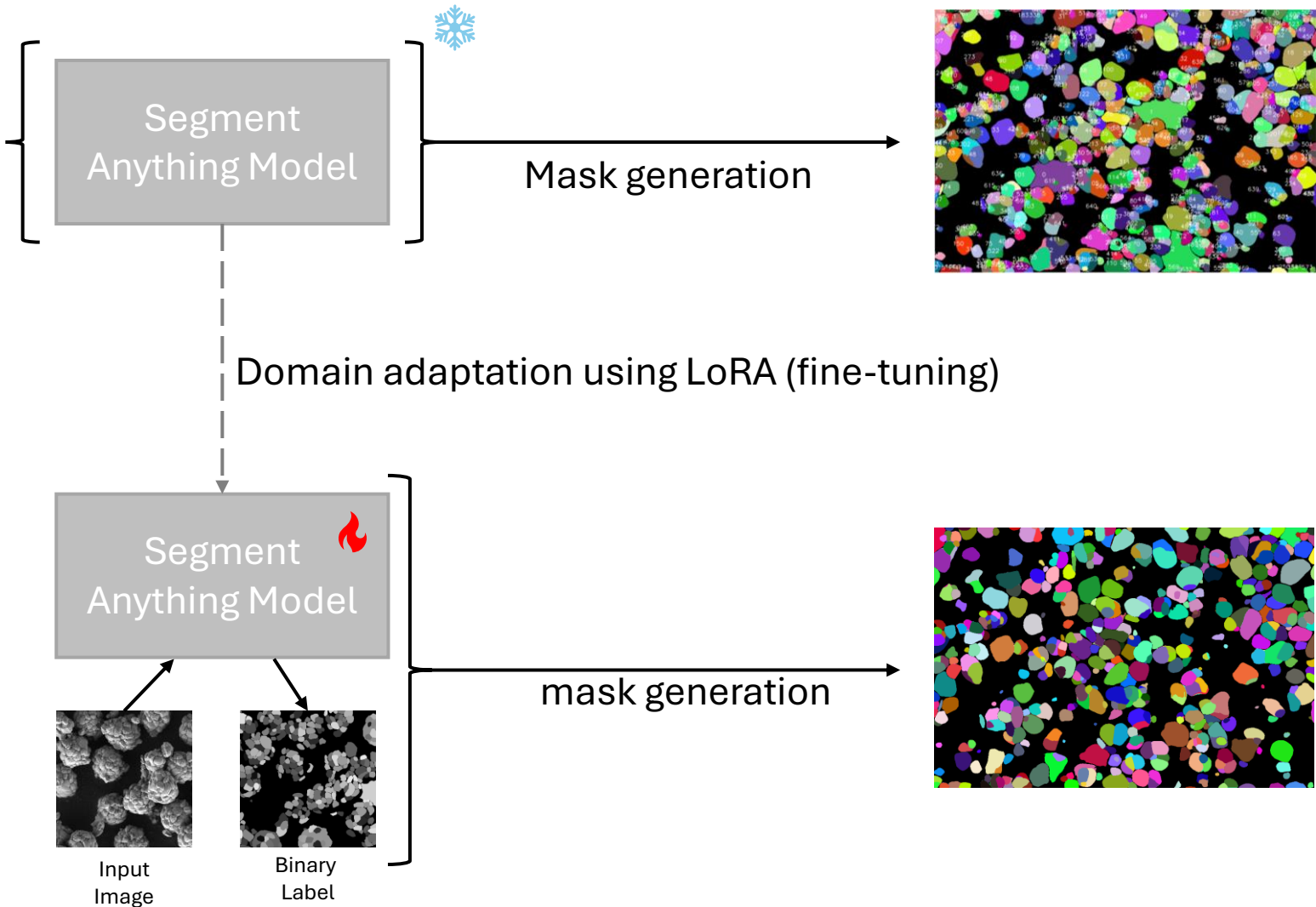
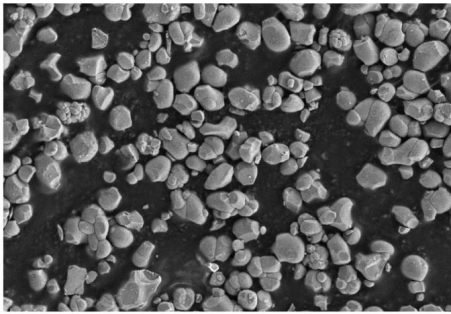
SAM predictor result gives us insight on what SAM actually understands about the image¹.

If we improve SAM predictor result, then the Mask Generator output will also be improved

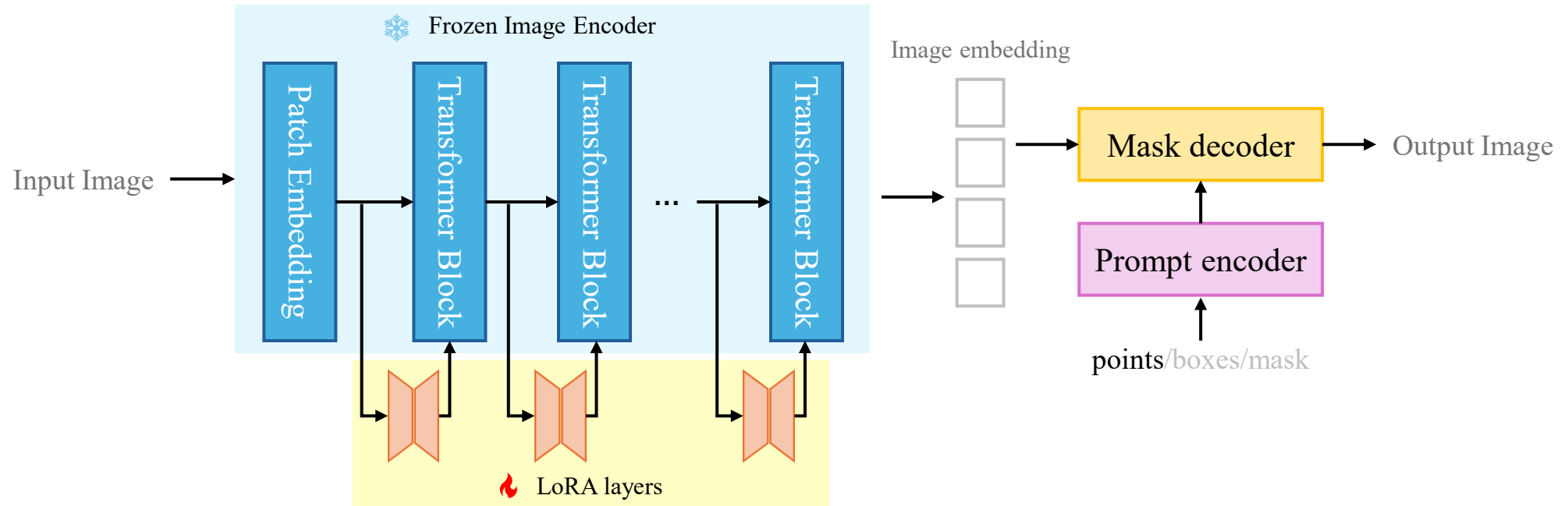
Approach



Approach



Approach



LoRA layers are added only to the encoder because we need to learn representations that is different from its trained data². As encoder is responsible for capturing visual information, most of the adaptation researches implement LoRA in the encoder³.

²[Customize Segment Anything Model for Multi-Modal Semantic Segmentation with Mixture of LoRA Experts](#)

³[AM-SAM: Automated Prompting and Mask Calibration for Segment Anything Model](#)

Dataset

Total Images: 243

Image shapes: [(1024x768) - 83 images
(768, 666)] - 160 images

Dataset Split Ratio: [7:2:1]

Augmentations performed: [Sliding window,
Random crop (0-90),
Random flip (horizontal, vertical),
Random contrast,
Random gamma]

Total number of augmented images: 5820

Final training Image shape: 512x512

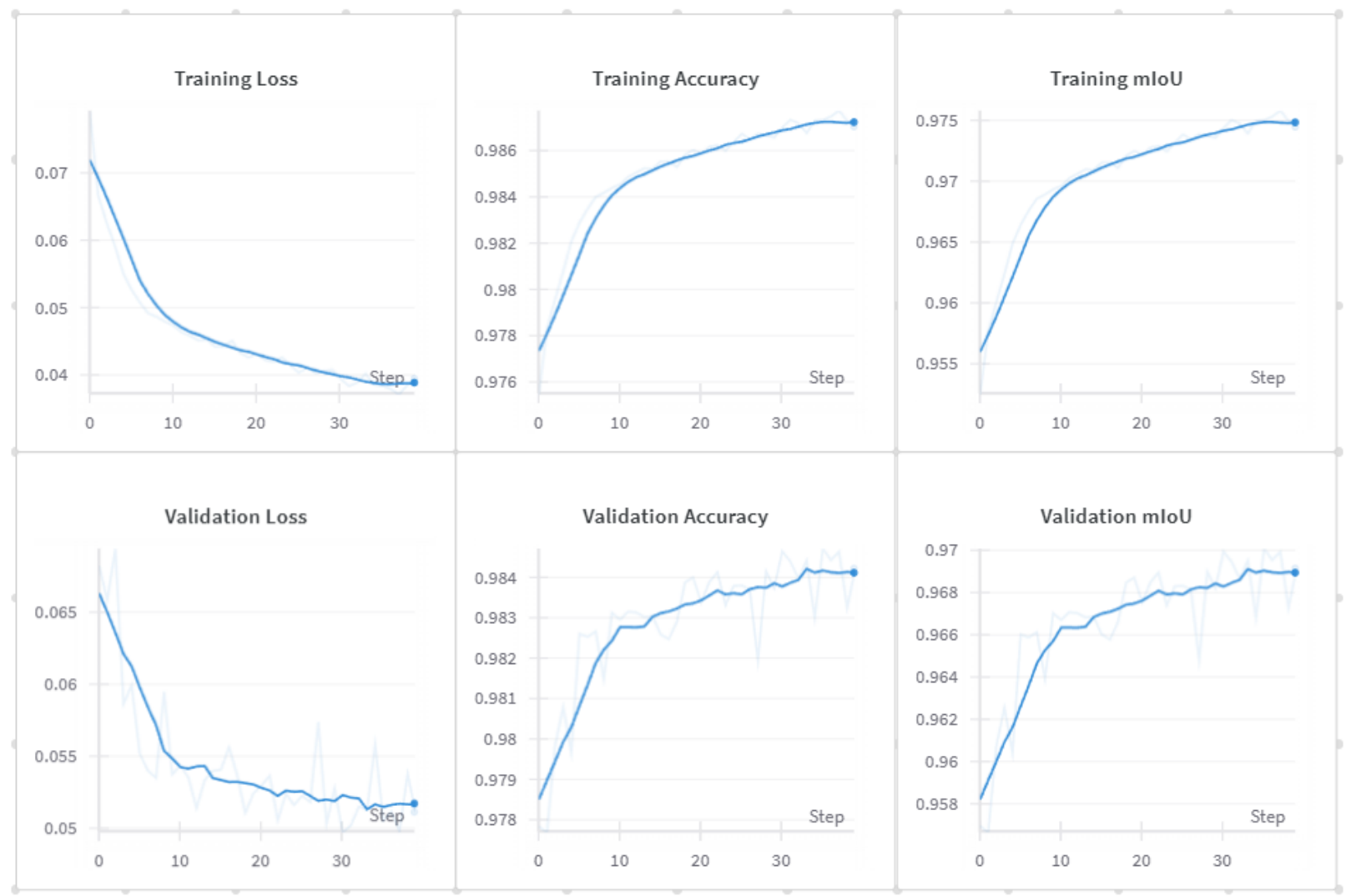
Training Parameters

LoRA Rank: 512
SAM Model: Base Model with ~91M parameters

Epochs: 40
Batch Size: 04
Learning Rate: 0.0001
Loss Function: Dice Cross-entropy
Optimizer: Adam, with weight decay – 0.01

Used Weights and Biases for logging experiment statistics.

Training Stats



Results → Test Set Dice – 96.14 (avg)

Mask Generator Hyper parameters

Points per side = 100, Samples a regular grid of points over the image

Pred iou threshold = 0.90, Only select objects that surpass prediction iou threshold of 90%.

Stability score threshold = 0.92, SAM slightly tweaks the mask boundary a few times to see if it stays roughly the same. If the mask changes too much (stability under 0.92), it's considered unreliable and discarded.

Crop n layers = 1,

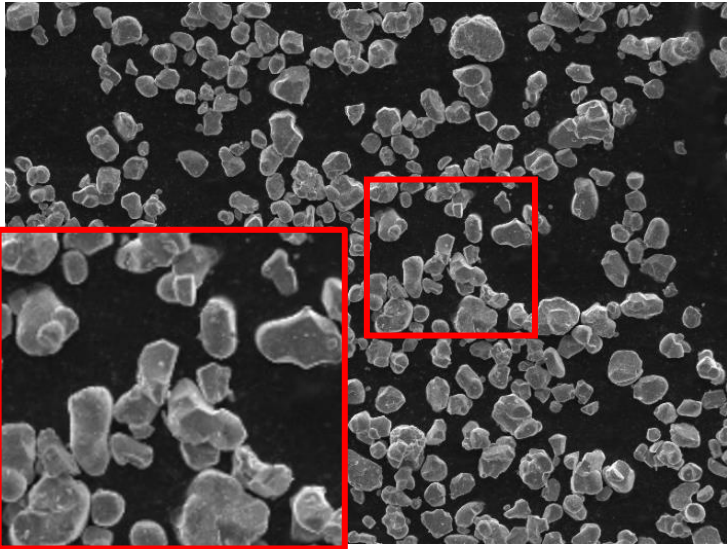
Crop n points downscale factor = 2, On smaller patches SAM uses fewer points, here 2 means, $100 / 2 = 50$ points per patch

Min mask region area = 100 After masks are proposed, any tiny blob smaller than 100 pixels is thrown away.

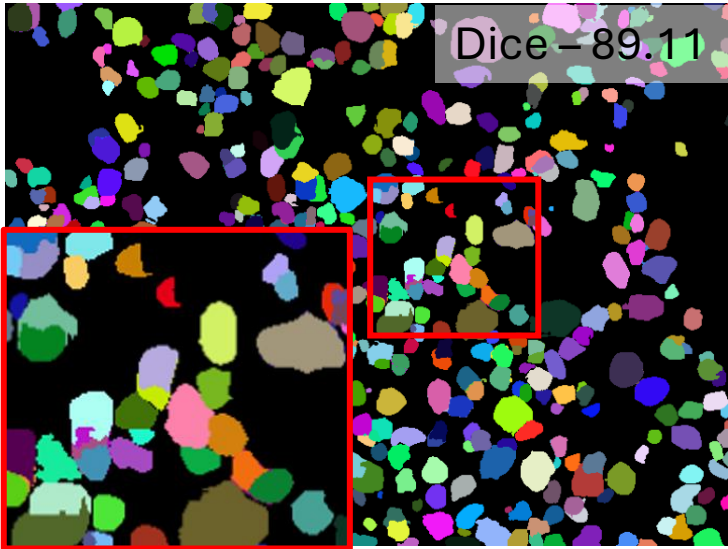
These values are set for all of the experiments.

Test Case 1

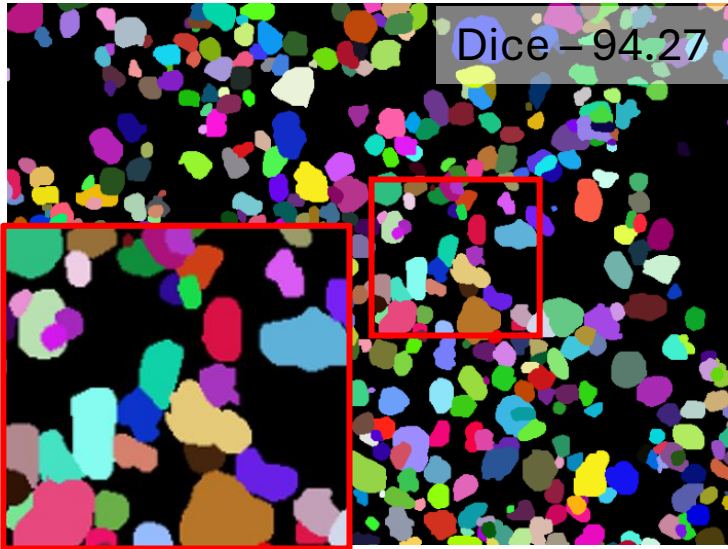
Input Image



 SAM-MG

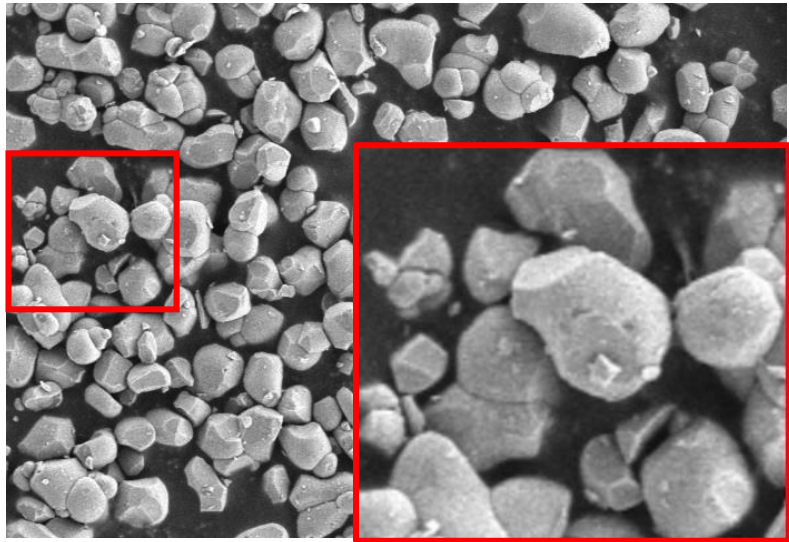


 SAM-MG

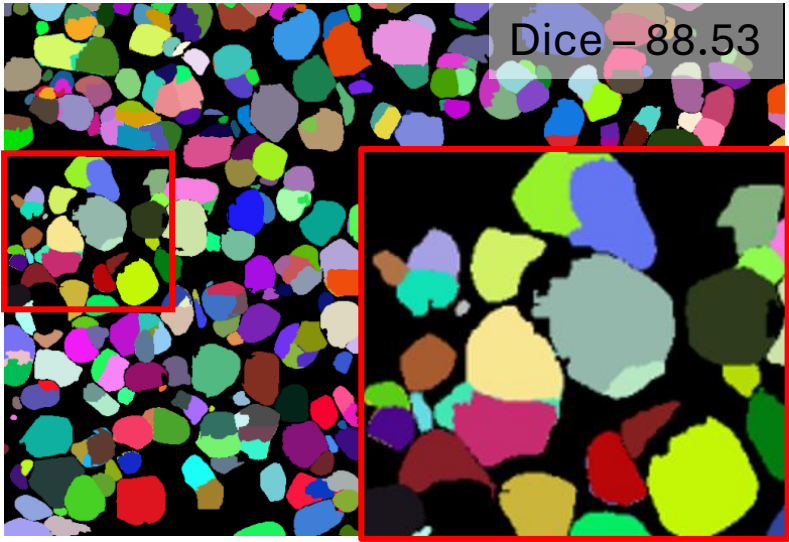


Test Case 2

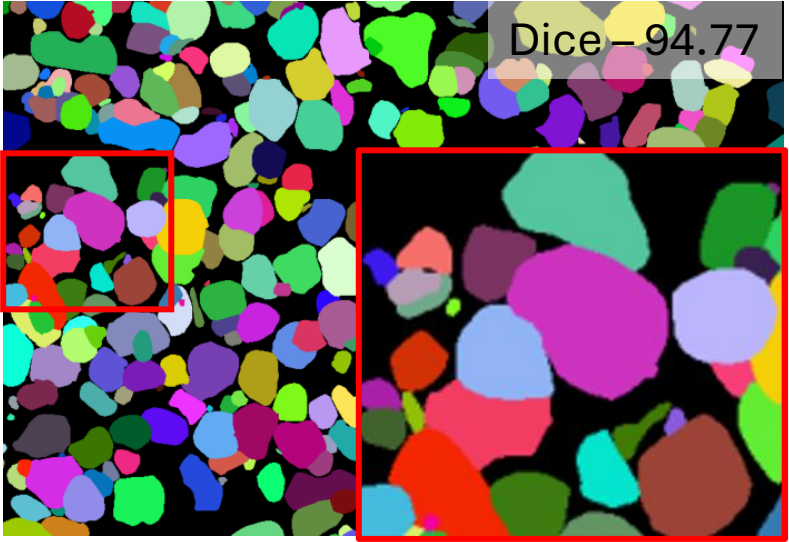
Input Image



 SAM-MG

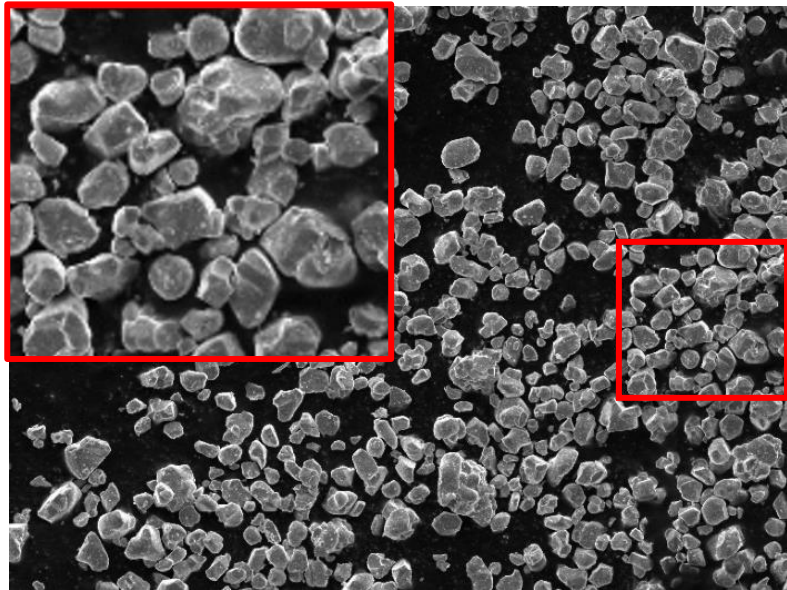


 SAM-MG

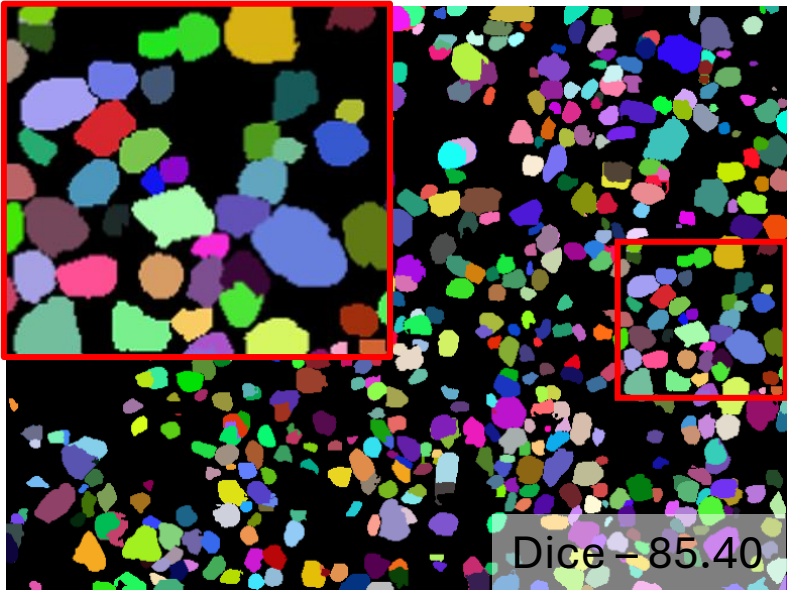


Test Case 3 – Lowest Dice Score

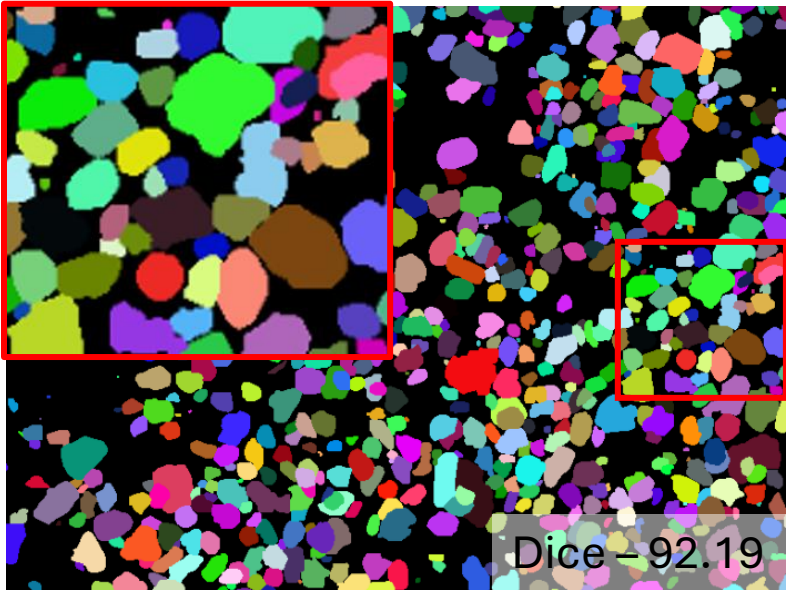
Input Image



 SAM-MG

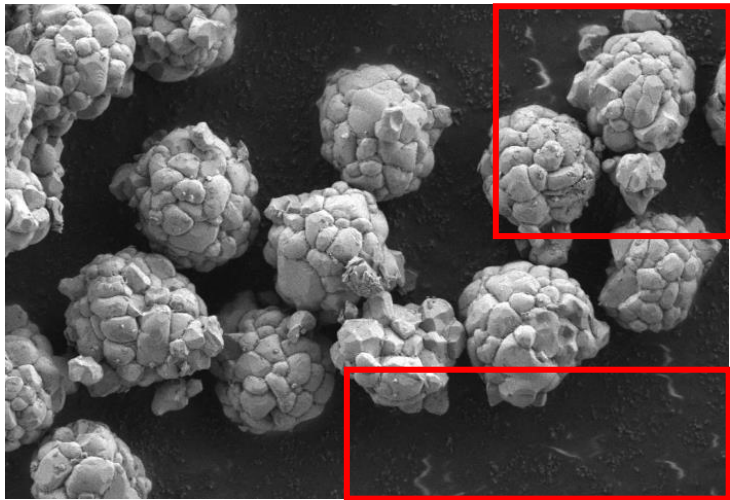


 SAM-MG

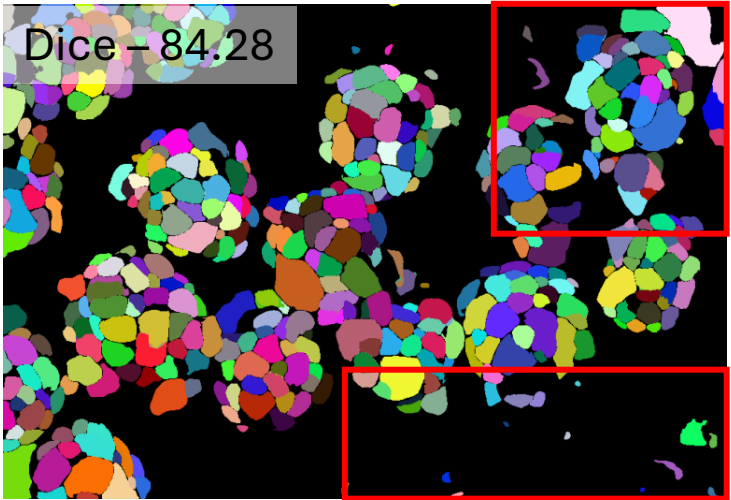


Test Case 4 – Highest Dice Score

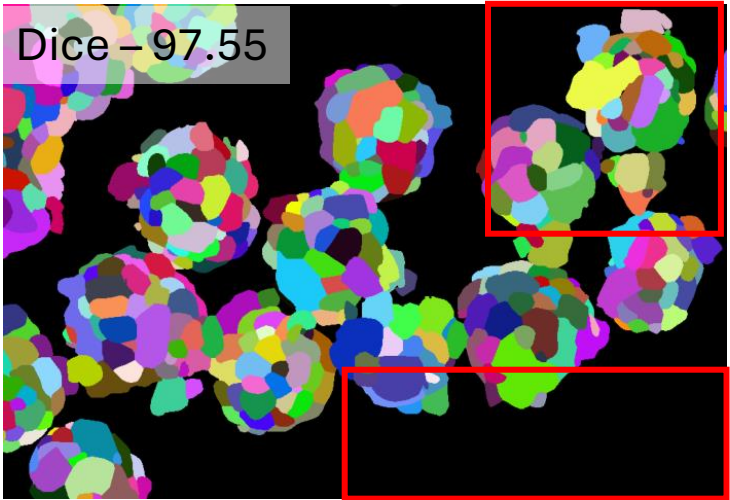
Input Image

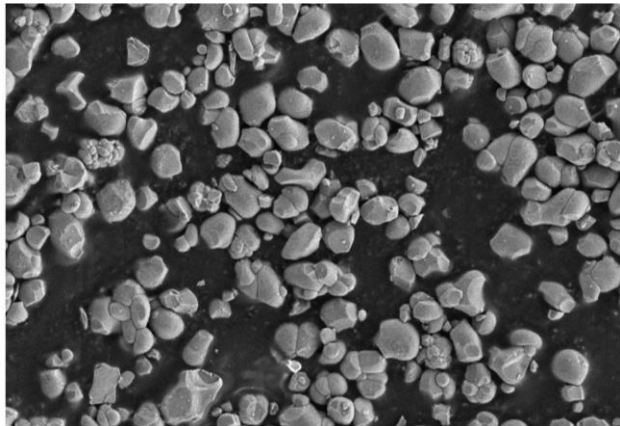


 SAM-MG

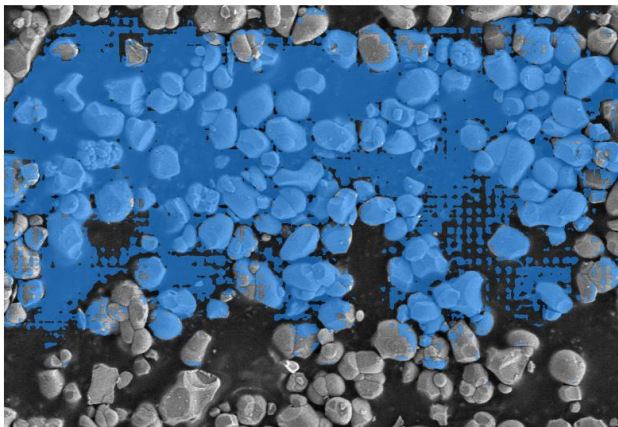


 SAM-MG

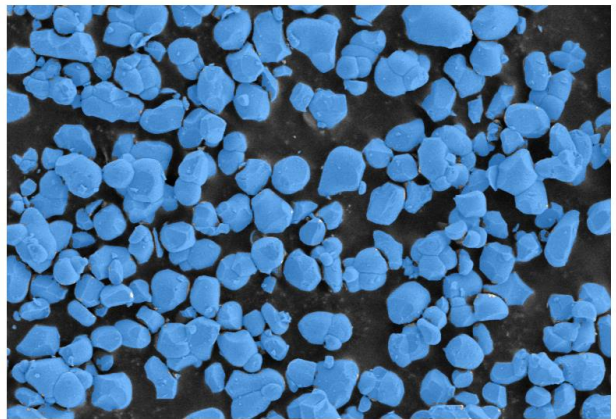




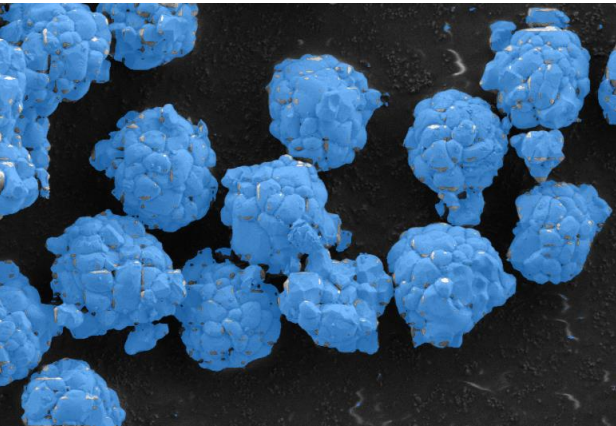
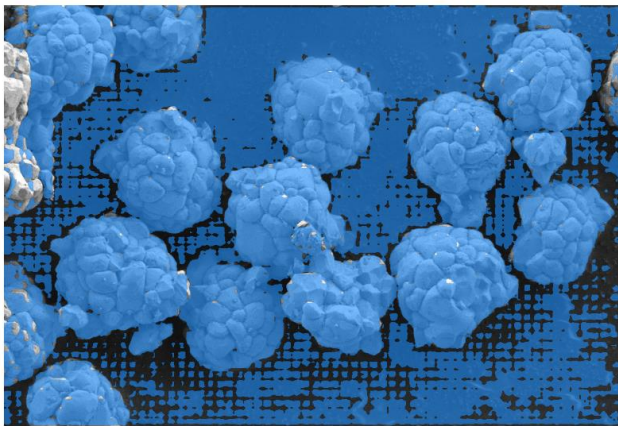
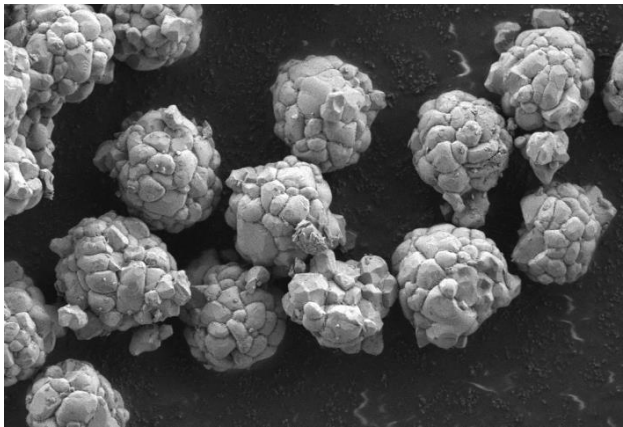
Input Images

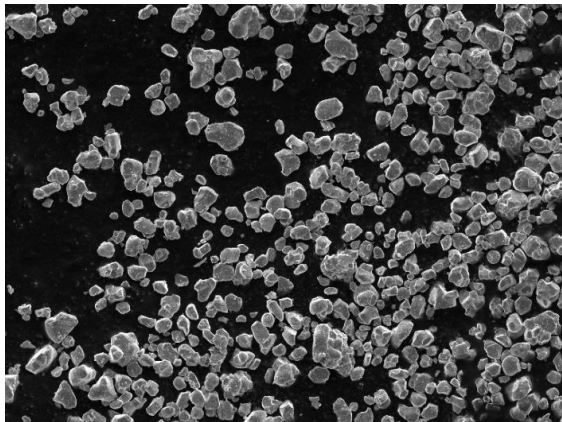


SAM Predictor
outputs

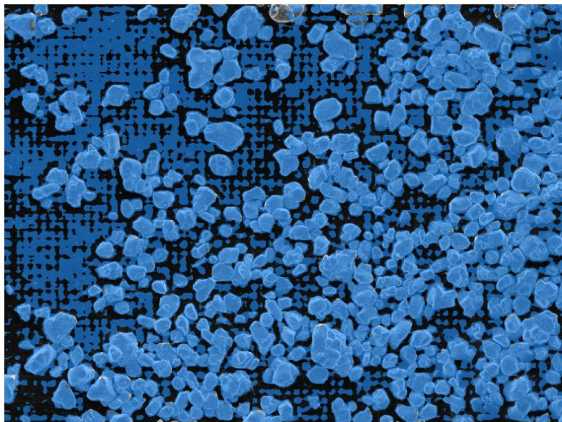


LoRA-SAM Predictor
outputs

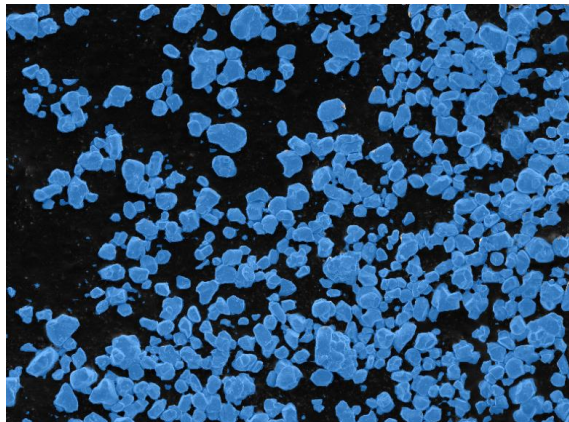




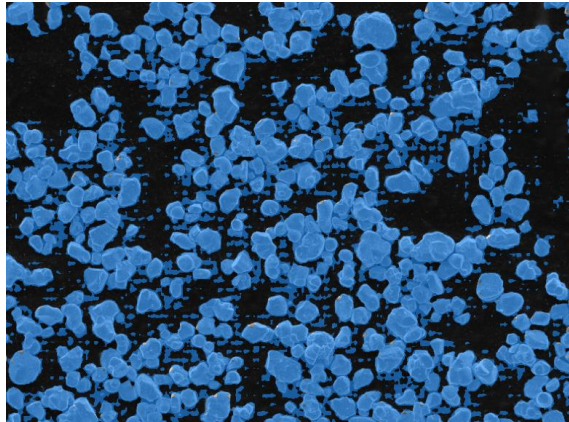
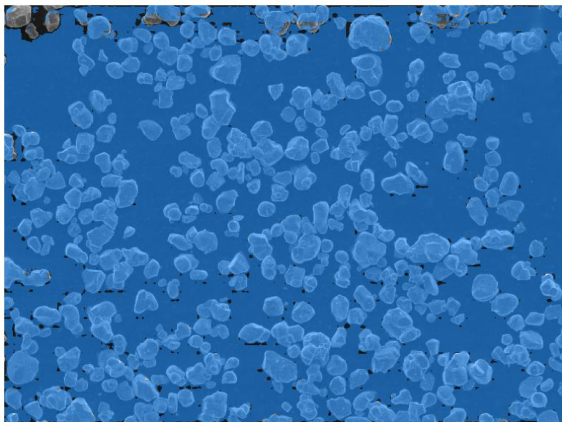
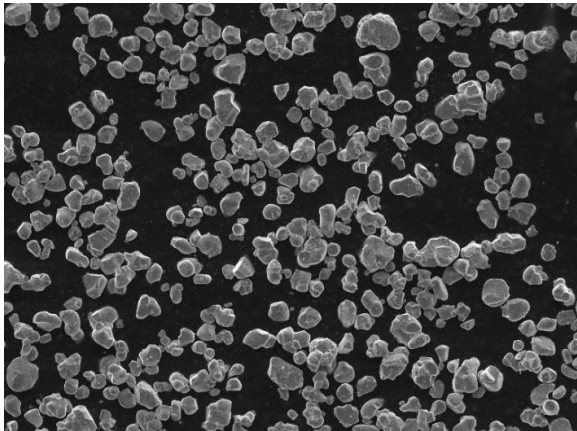
Input Images



SAM Predictor
outputs



LoRA-SAM Predictor
outputs

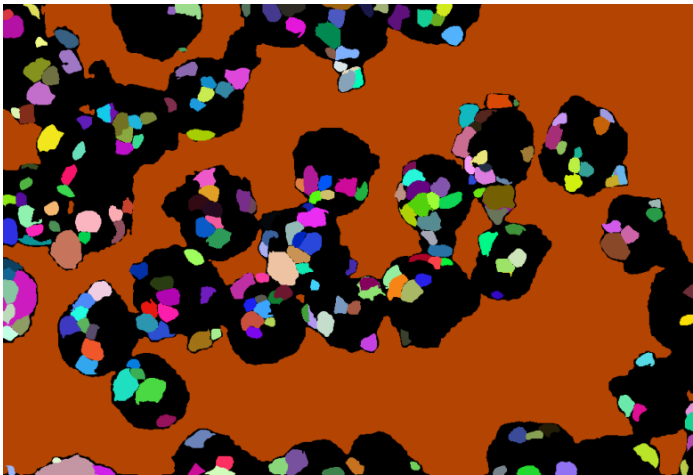


LoRA Rank Experiments

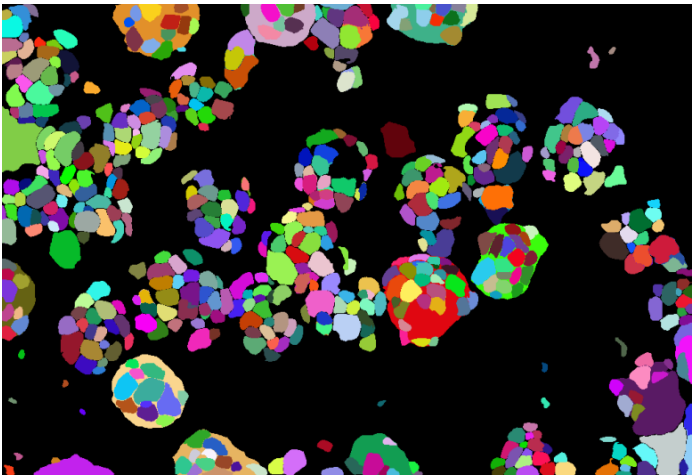
SAM Base model parameters = ~91M

Rank	Trainable Parameters	Dice Score
128	2.8M	82.39
256	5.73M	89.56
512	11.44M	96.14
1024	22.9M	96.22

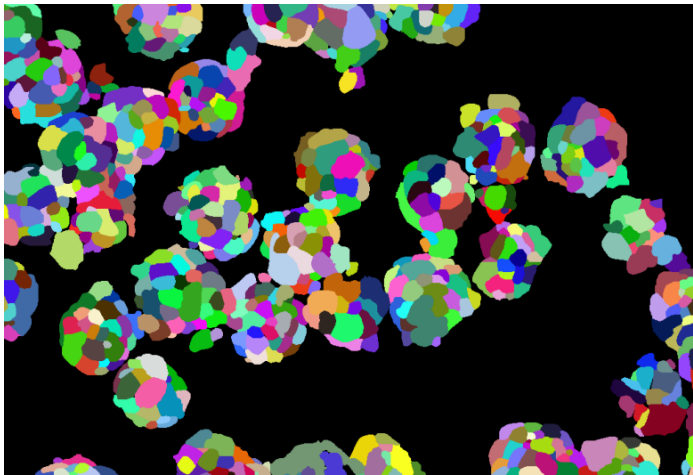
Rank 1024 has little performance increase but requires more training resources



Rank 128



Rank 256



Rank 512

Learning Rate Experiments

Learning Rate	Dice Score
0.01	89.50
0.001	94.29
0.0001	96.14
0.00001	93.75

Batch Size Experiments

Batch Size	Dice Score
2	90.61
4	92.77
8	96.14
16	94.55
32	95.48