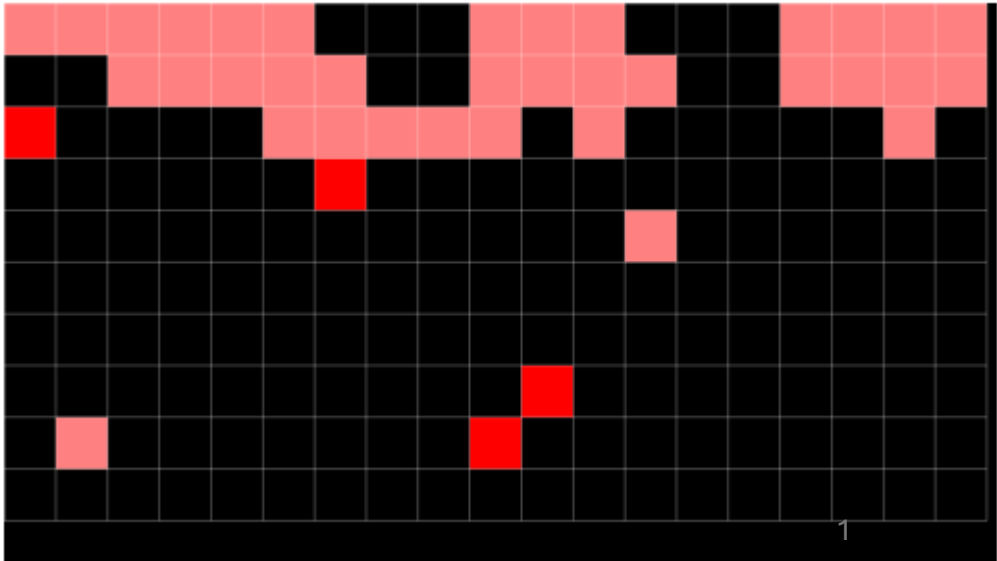
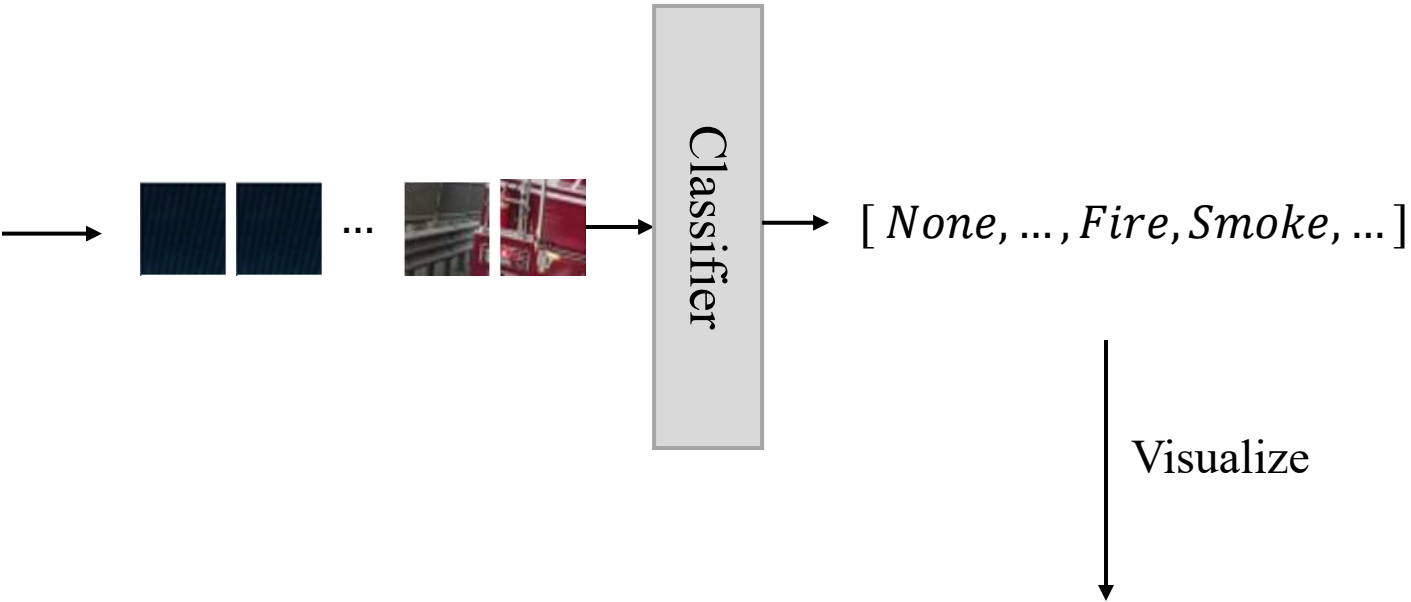


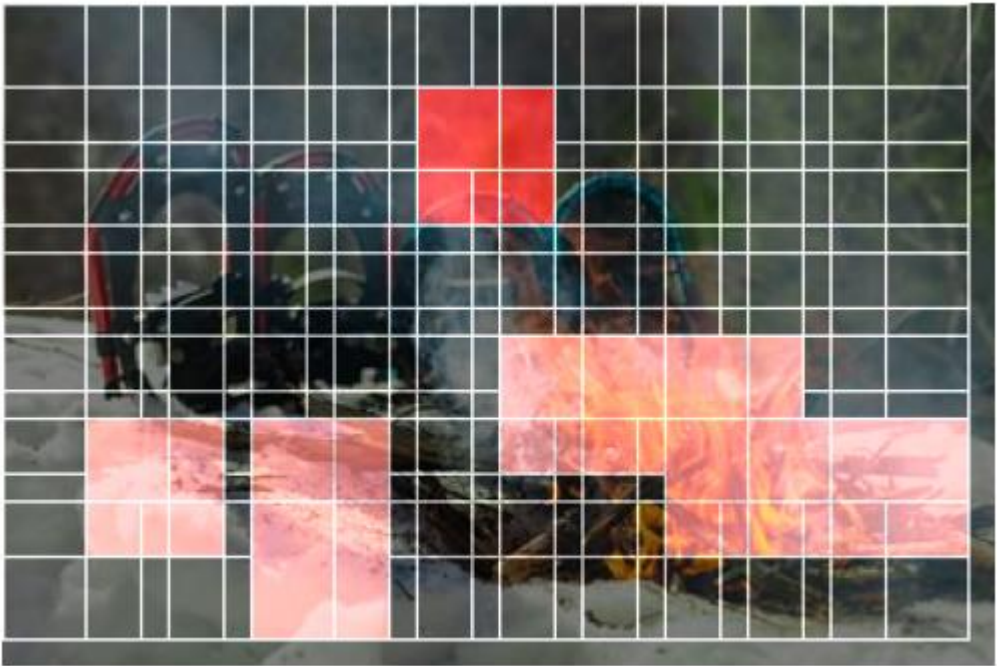
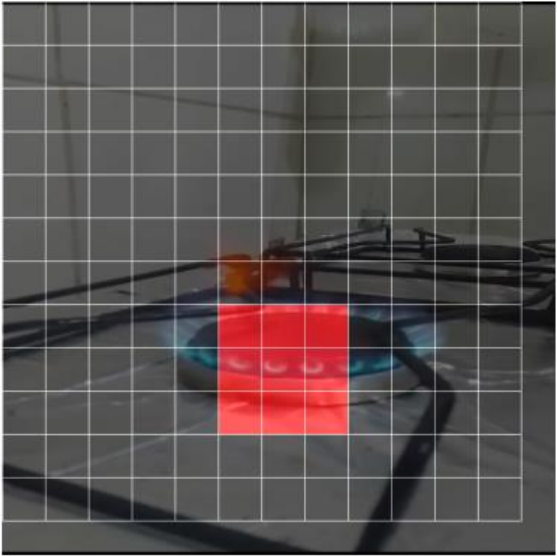


Create Patches from images/ frames

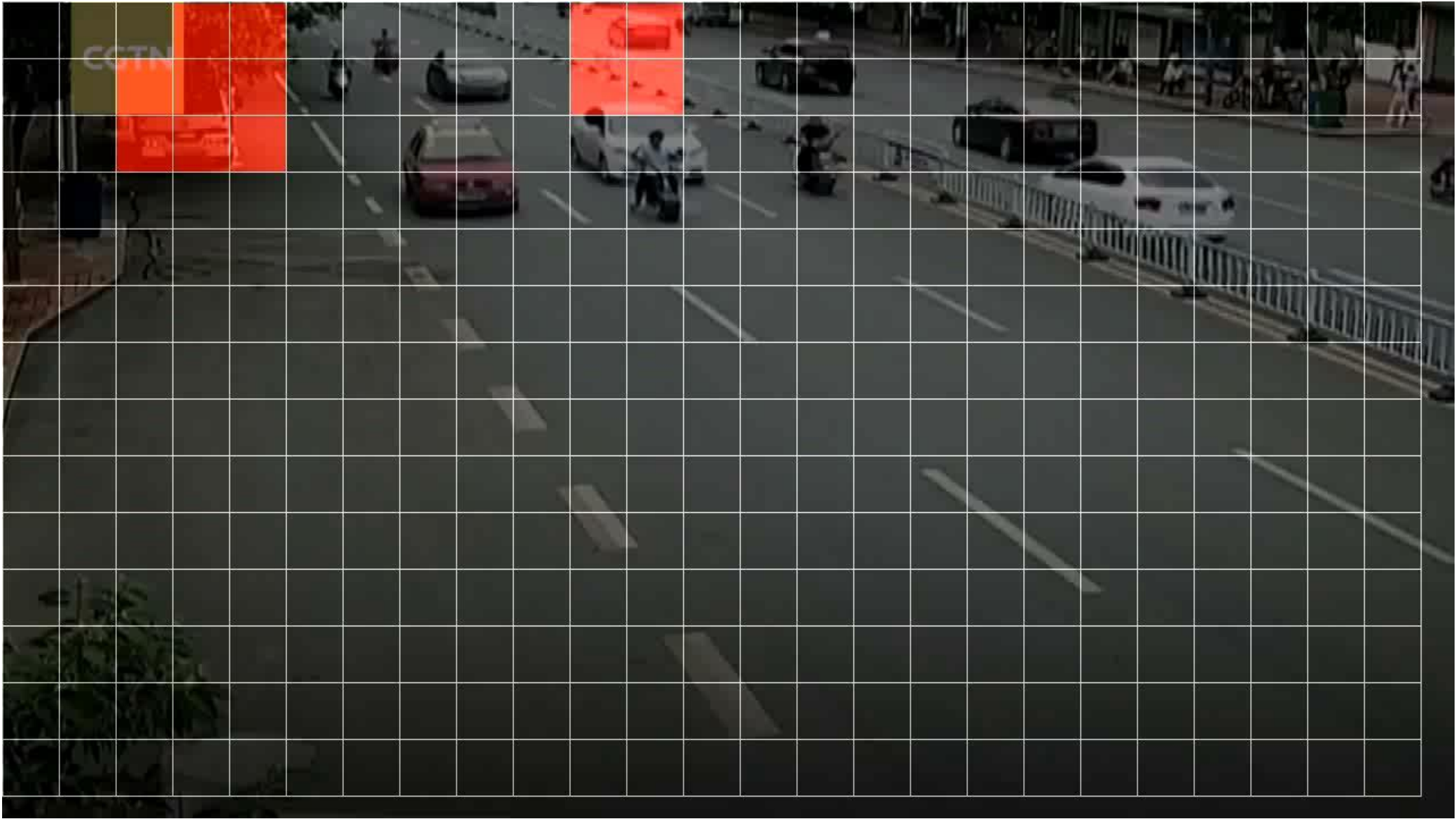
Pass the list of patches to a classifier



Sample Results on Images



Sample Results on Video

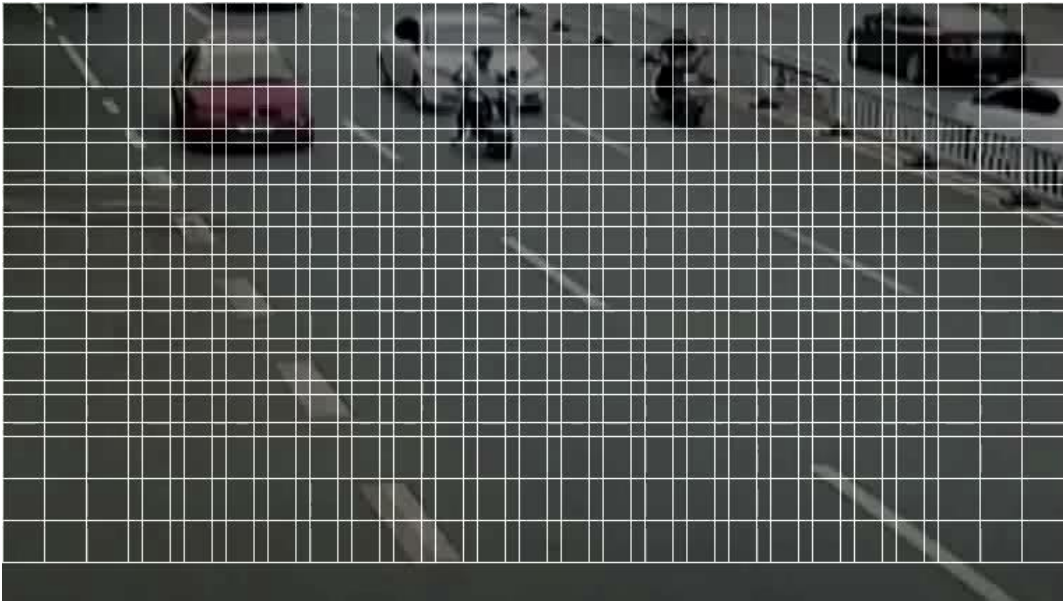


Sample Results on Video after fine-tuning

Input Video



Output



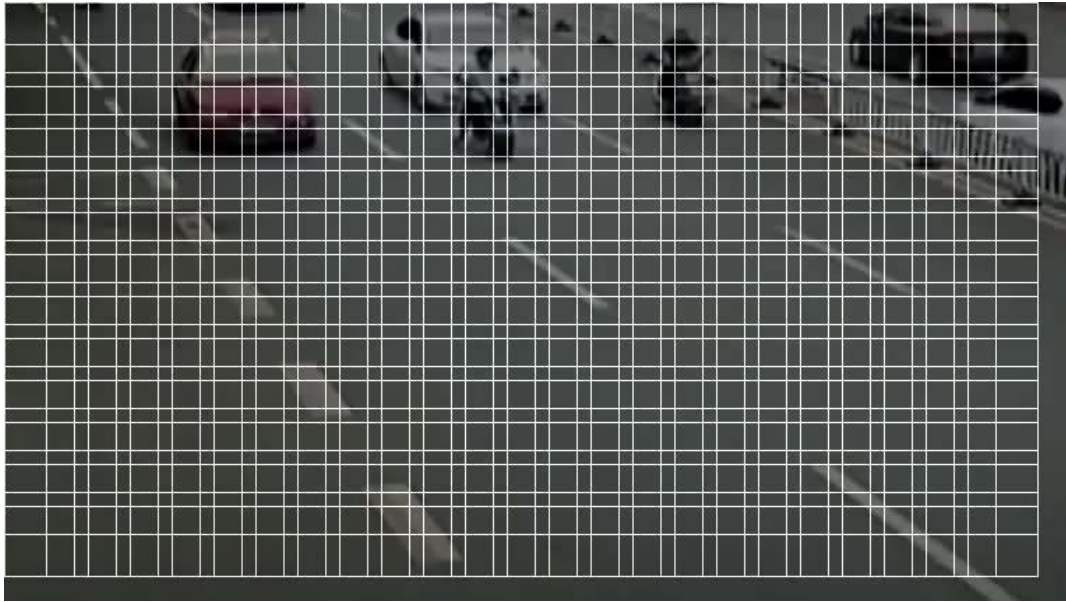
Threshold Conf- 0.5

Sample Results using transfer learning model

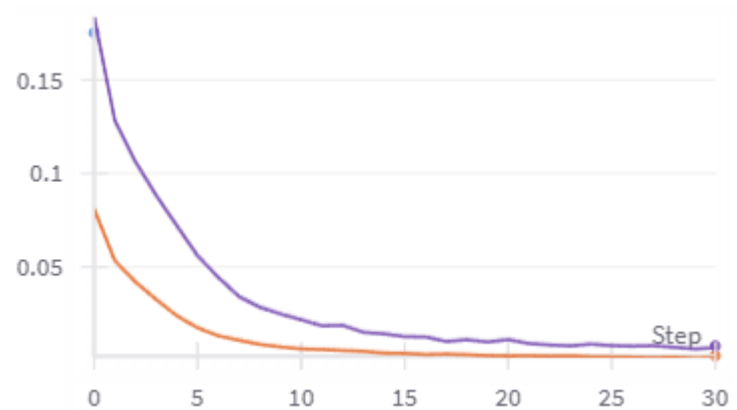
Input Video



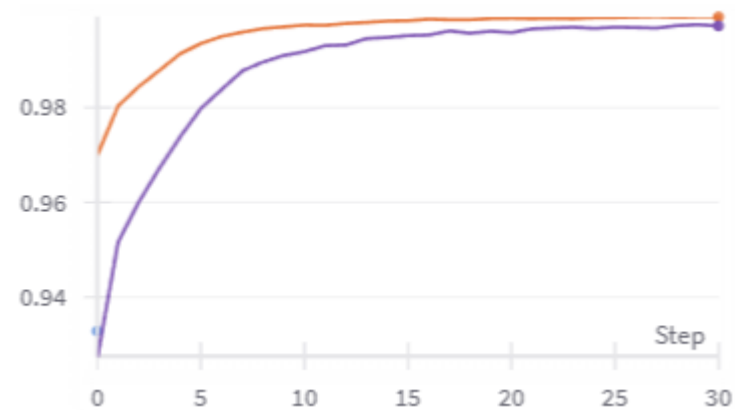
Output



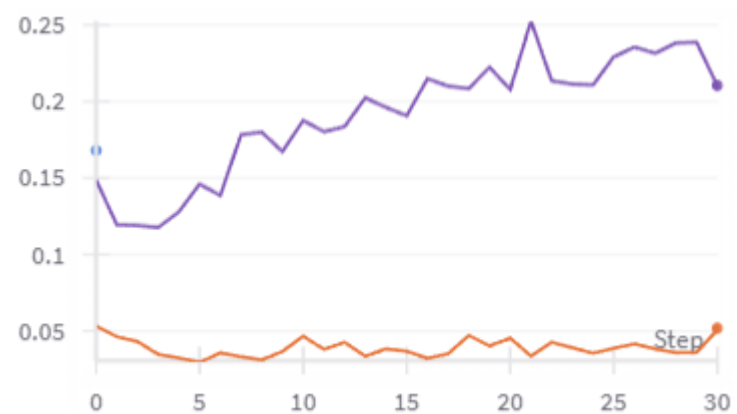
Train Loss



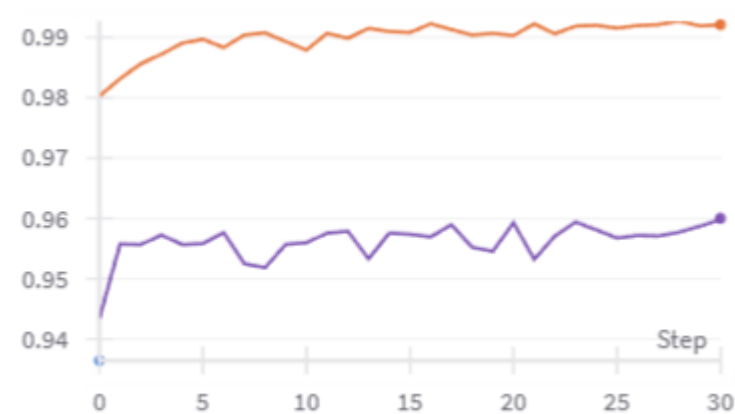
Train Accuracy



Val Loss



Val Accuracy



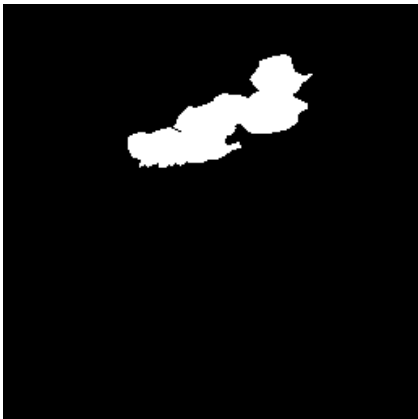
Without average pooling

With average pooling

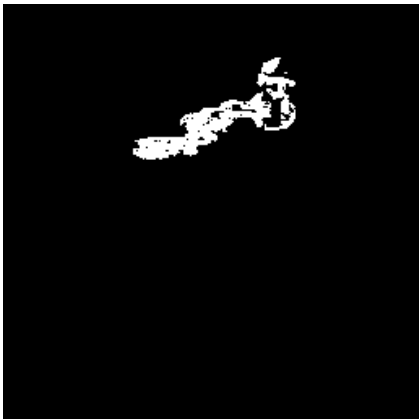
GMM Training



Image



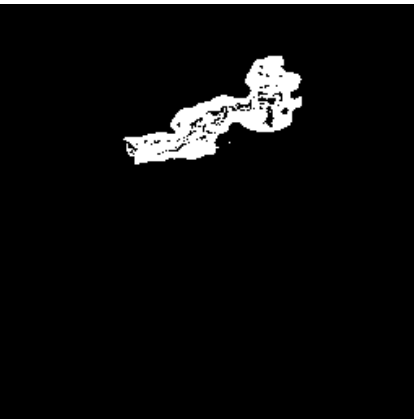
Ground truth



RGB GMM
output



LAB GMM
output



YCbCr GMM
output

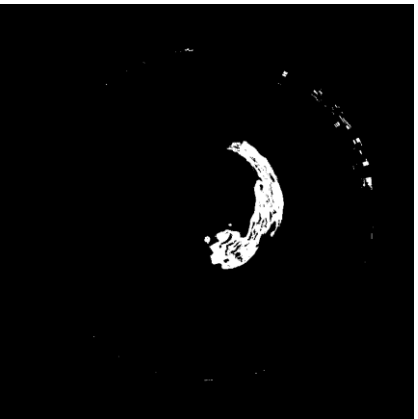
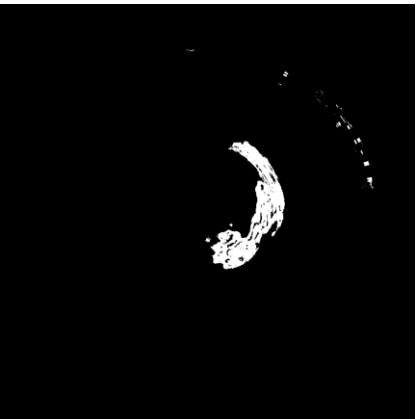
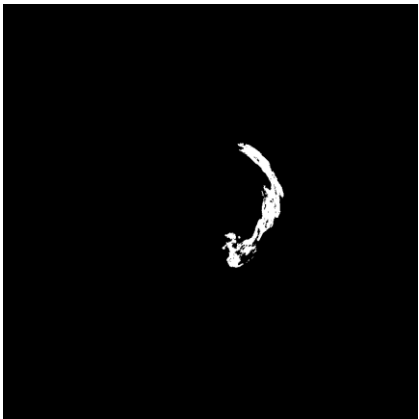
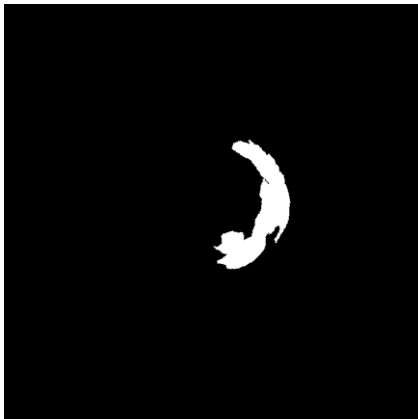
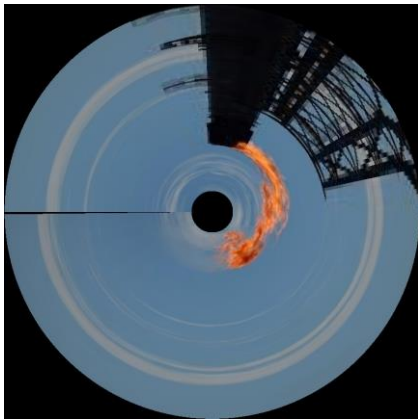
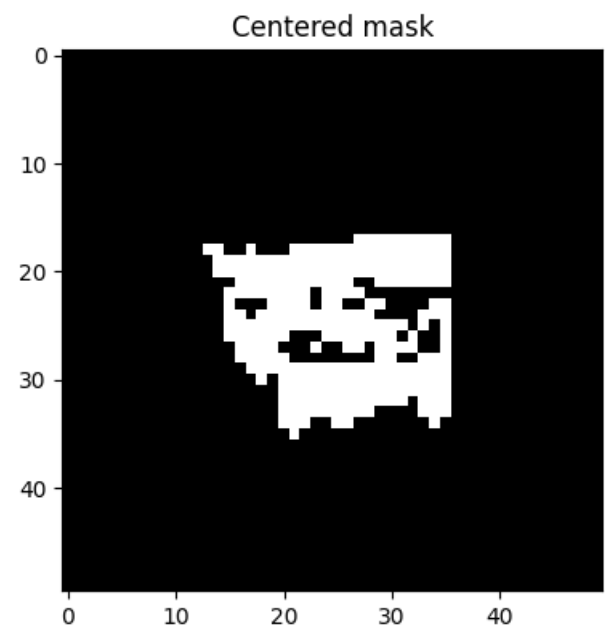
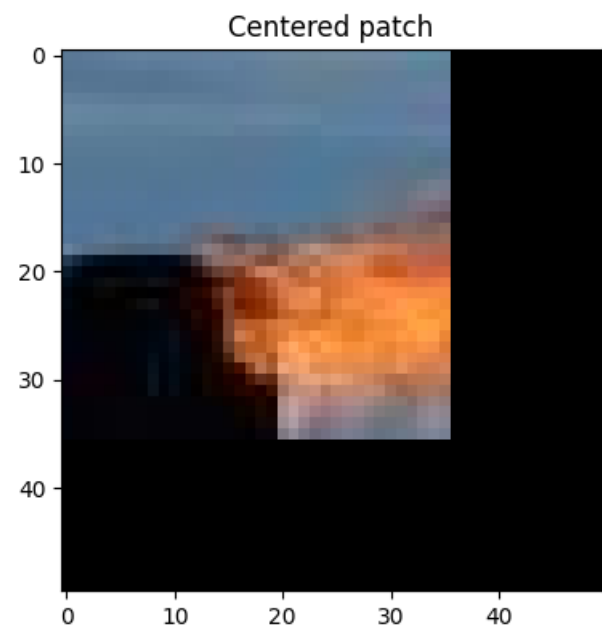
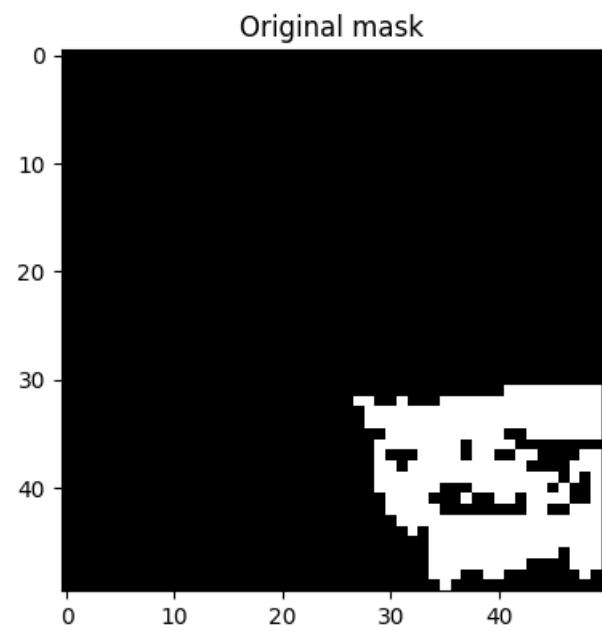
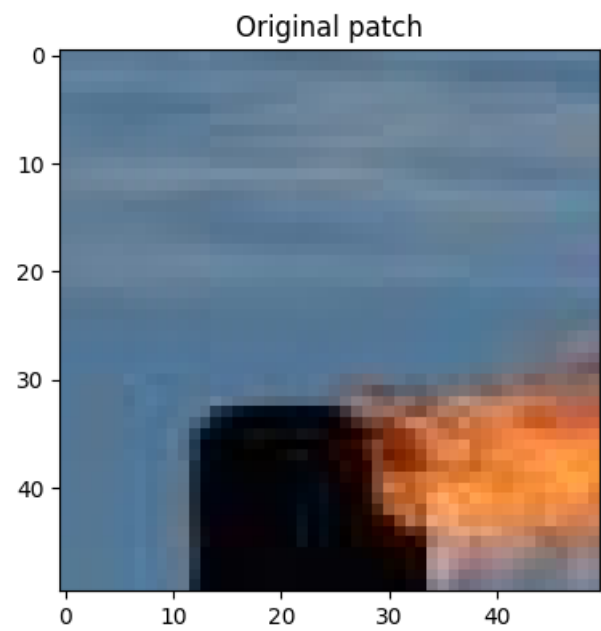


Image Centering after finding fire using GMM



Why simple translation does not work.

